



OPENOCEAN

ROBOTICS



Discover zero-emission, safe and affordable ocean monitoring with solar-powered **DataXplorer™** and AI-driven software **Xplorerview™**



BIG DATA COLLECTION
LOW-COST OCEAN INSIGHTS



OFFERING USV SERVICES & SALES

ENVIRONMENT

- Marine mammal monitoring
- Bathymetric survey
- Metocean monitoring
- Current monitoring
- Biodiversity assessments - eDNA sampling
- Acoustic node for subsea data retrieval
- Ocean-based carbon dioxide removal monitoring
- Fish population surveys
- Algal blooms

INDUSTRY

- Marine mammal monitoring
- Subsea cable inspection
- Construction survey
- Current monitoring
- Pre and post storm monitoring
- Communications gateway
- Leak detection
- Noise monitoring
- Structural inspection

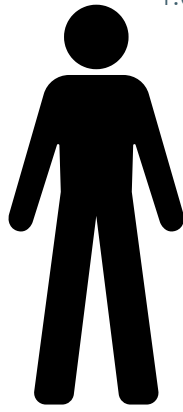
SECURITY

- Marine mammal monitoring for range clearing
- Illegal fishing enforcement
- Counter smuggling/trafficking
- Port safety
- Patrolling the Arctic
- Coastal resilience monitoring
- Monitoring vessel traffic for compliance
- Armaments locating

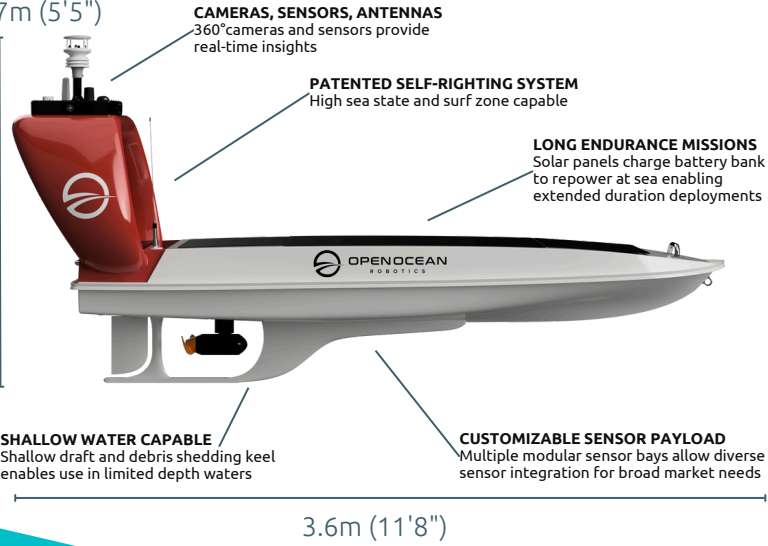
DataXplorer™



**UNCREWED
SOLAR-POWERED
MADE FOR BIG WAVES**



1.67m (5'5")



OVER THE HORIZON CONTROL

Satellite, cellular, and radio communications with real-time data streaming optimization

QUIET & LOW PROFILE

Electric motor and drift-mode for optimal data collection and minimal environmental impact

EASY LOGISTICS

Shore or ship deployable, easy trailer or container transport

YOUR EYES AND EARS ON THE WATER

AI-powered detection and analysis for real-time insights above and below the water

ENHANCED HORIZON™



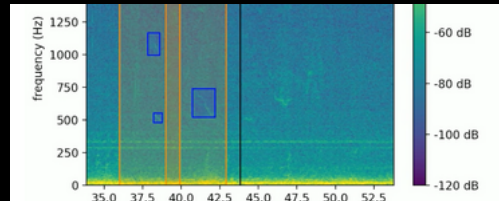
AI-powered day and night detection, classification, and tracking with 360° electro-optical and thermal cameras.



UNDERWATER LISTENER™



AI-driven acoustic detection and classification of acoustic sources on and below the surface.



LENGTH	3.6m (11.7 feet)
BEAM	0.9m (2.9 feet)
DRAFT	0.5m (1.6 feet)
DRY WEIGHT	140kg (308 lbs)
MAX PAYLOAD WEIGHT	60kg (132 lbs)
PROPULSION	3 HP equivalent electric motor
SPEED	Cruising 2 kn, max 6 kn
COMMUNICATIONS	Cellular, satellite, radio
HULL MATERIAL	Composite fibreglass
BATTERY CAPACITY	Up to 17.5 kWh
RANGE	430 nm (without additional solar input)
SOLAR POWER	300 W

XplorerView™



**SECURE
REAL-TIME
MADE FOR BIG DATA**



XplorerView™ is a secure cloud-based portal for real-time data viewing, actionable insights, and USV operations. Its easy-to-use interface enables stakeholders to access USV collected data instantly and analyze it with supplemental data feeds to maximize value.

OFFERING USV SALES & SERVICES IN:

- ✓ MARITIME DOMAIN AWARENESS
- ✓ RESEARCH & ENVIRONMENTAL MONITORING
- ✓ OFFSHORE ENERGY LIFECYCLE MONITORING

